

2ª JORNADA de la Red Española de Investigación en COVID Persistente

COVID persistente: Avances hacia
una estrategia integral de cronicidad

2025

Madrid • 12 de septiembre
Sede: CaixaForum Madrid

Organizado por:

REiCOP
Red Española de Investigación
en COVID Persistente

Con la colaboración de:


Fundación "la Caixa"

Long COVID and its impact on healthcare worker's job performance. A qualitative study in Spain.

Pia Delano ^{1,2} - **Vicky Serra-Sutton** ^{2,3} – **Dolors Rodriguez-Arjona** ^{4,5} - **Fernando G. Benavides** ^{1,2,6,7} - **Alejandra Vives** ⁷ - **Mireia Utzet** ^{1,2,6}

1. Center for Research in Occupational Health (CiSAL), Universitat Pompeu Fabra, Barcelona, Spain
2. Center for Biomedical Research Network (CIBER) of Epidemiology and Public Health, Madrid, Spain
3. Agència de Qualitat i Avaluació Sanitària de Catalunya (AQuAS), Barcelona, Spain
4. Investigadora social colaboradora de CiSAL, Universitat Pompeu Fabra, Barcelona, Spain
5. Fundación Mémora, Fundación Mémora, Barcelona, Spain
6. Hospital del Mar Medical Research Institute (IMIM), Barcelona, Spain
7. Escuela de Salud Pública, CEDEUS, Pontificia Universidad Católica de Chile, Santiago, Chile





Funding

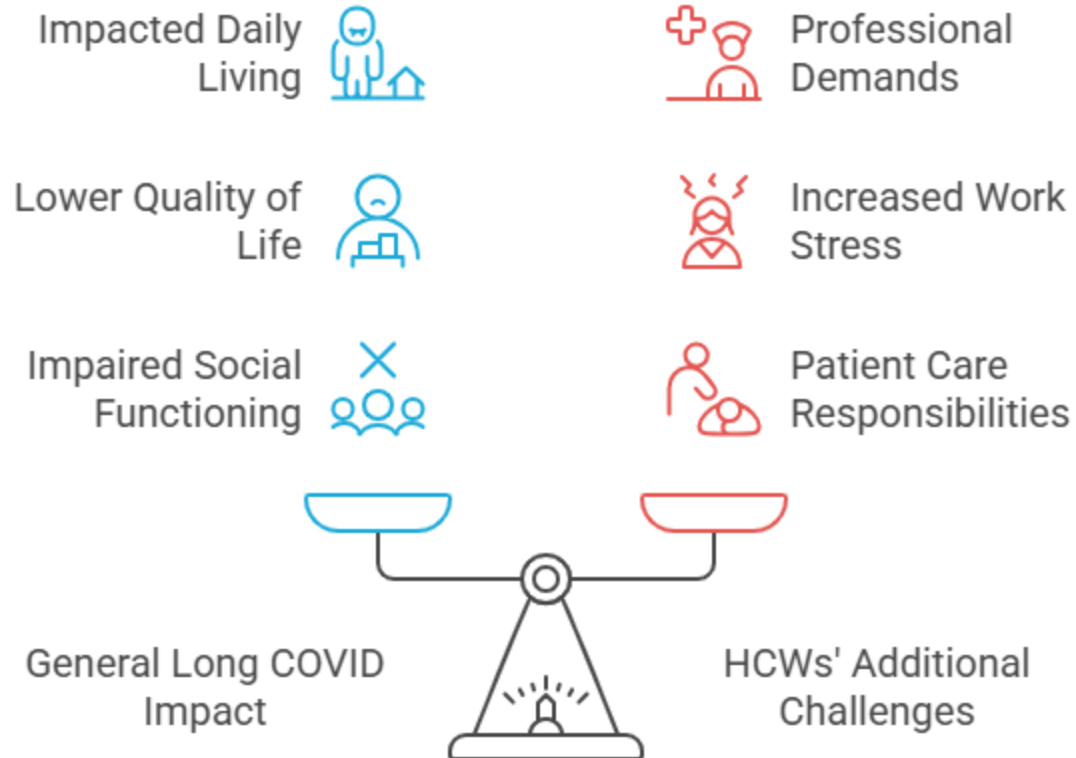
- This research was supported by CIBER -Consortio Centro de Investigación Biomédica en Red Instituto de Salud Carlos III, Ministerio de Ciencia e Innovación and Unión Europea. ESP23PI04.
- Pia Delano was supported by the predoctoral program AGAUR-FI grants (2023 FI-3 00065) Joan Oró of the Secretariat of Universities and Research of Department of Research and Universities of the Generalitat de Catalunya and the European Fund Social Plus.

Ethical considerations

This research was approved by the ethics committee of Hospital del Mar (HM 2022/10544) and presented to each hospital own ethical committee. All participants signed an informed consent before participating in the focus groups and interviews. Additionally, the research team followed the good practice codes in health service research published by AQuAS



Background and Aim



Made with  Napkin

Aim: To explore the experiences of healthcare workers (HCWs) in Spain with long COVID and its impact on their job performance, from the perspectives of affected HCWs, healthcare providers, and key stakeholders.



Methods

- A phenomenological, constructivist approach was used.
- Seven online focus groups and four interviews were conducted from April to June 2024.
- Transcripts were thematically analysed using Atlas.ti with a predefined coding framework.



Healthcare providers

Focus groups with HCWs involved in long COVID care. Participants included various specialties.

1



Affected HCWs

Focus groups with HCWs diagnosed with long COVID. Included hospital workers with and without direct patient care.

2



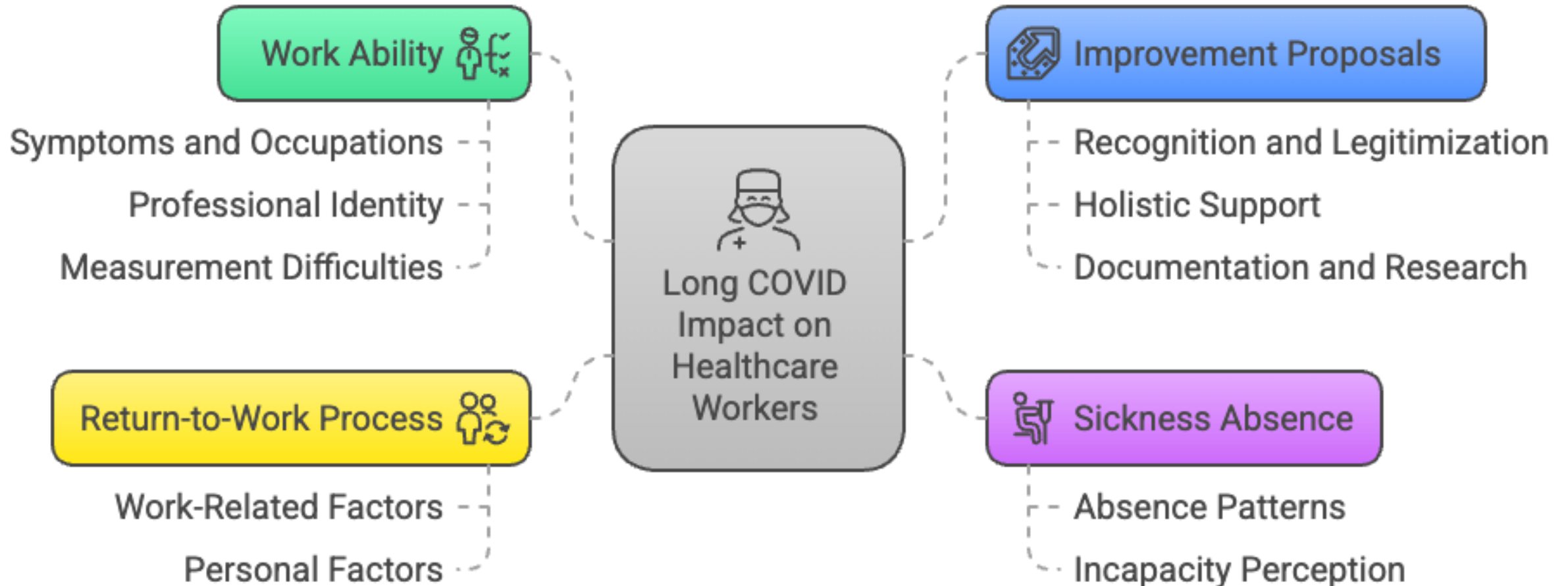
Key stakeholders

Semi-structured interviews with stakeholders from scientific organizations and patient advocacy groups.

3

Results

Themes and subthemes identified in HCWs with long COVID, healthcare providers and key stakeholders.

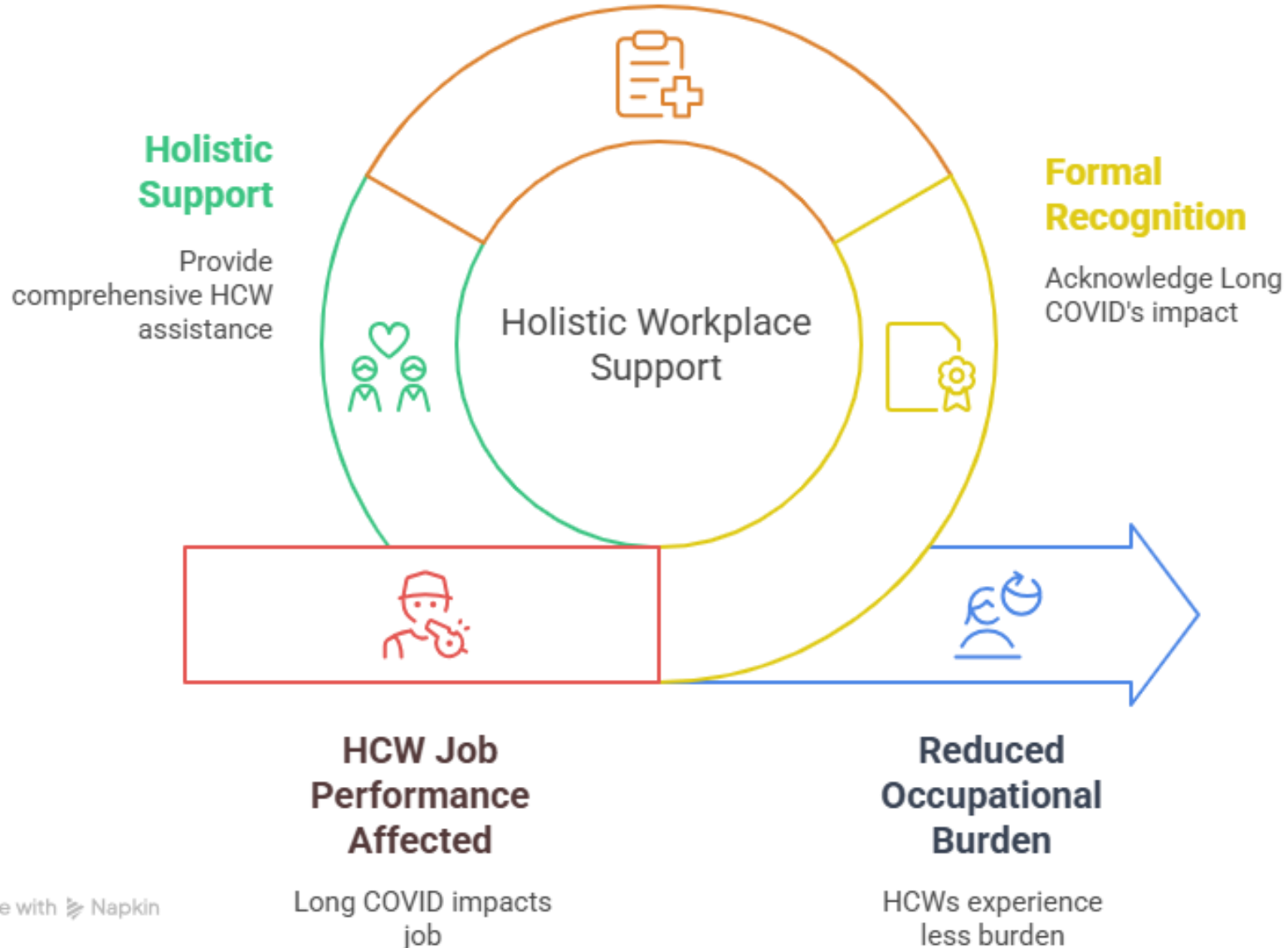




Discussion

Improved Documentation

Track Long COVID
cases





Thank you

Contact: pia.delano@upf.edu